

# TOUCH POINT





# TOUCHMILL

A line of products designed to ennoble the aesthetic and physical qualities of leathers.

**Treatment is carried out in dry milling drums**, to get the most out of every product in a controlled environment.

The research, study and formulation of new solutions for the Touchmill line are designed to meet the “Customisation” needs of the leather.

Injecting Touchmill products into the dry milling drum and controlling the temperature and humidity, gives the leathers a natural effect and results in significant savings in production costs.

In the GSC Group tradition, the Touchmill line is the result of skilful and reliable work and something very important – innovation.



---

Naturalness



---

Innovation



---

Excellence





ISO 14064-1  
BUREAU VERITAS  
Certification



Verification Statement IT301513-2  
dated 06.12.22 concerning the GHG  
inventory issued by Bureau Veritas  
for the calendar year 2021

# INDEX

---

<b>TOUCHMILL PRESENTATION</b>	<b>02</b>
<hr/>	
<b>SOFTENERS</b>	<b>06</b>
Touchmill C/FAT	07
<hr/>	
<b>BRIGHTENERS</b>	<b>08</b>
Touchmill C/I	08
<hr/>	
<b>AUTOMOTIVE</b>	<b>09</b>
Touchmill C/CAR	09
Touchmill C/2030	09
<hr/>	
<b>TOUCH MODIFIERS</b>	<b>10</b>
Touchmill C/W8	11
Touchmill C/LDM	11
Touchmill C/LDS	11
Touchmill C/WS	12
Touchmill C/W0	12
Touchmill C/WA	12
Touchmill C/01	12
Touchmill C/WAX	13
Touchmill C/464	13
Touchmill C/232	13
Touchmill C/SC	13
Touchmill F/011	14
Touchmill G/07	14
Touchmill LPG	14
Touchmill 883	14
Touchmill 799	15
Touchmill LF	15
Touchmill C/LUX	15
<hr/>	
<b>CURIOSITY</b>	<b>16</b>
Touchmill C/A	16
Touchmill FIX C/295	17
Touchmill NO SMELL	17
Touchmill SC04	17

The softness of leather is like  
the tenderness of a caress.

# SOFTENERS

- TOUCHMILL C/FAT





## TOUCHMILL C/FAT

Touchmill C/FAT is used to soften leathers.

To be used on crust or finished leathers and never in the intermediate phase. It is also an excellent product for cleaning leathers, in both dry-milling drums and used on the finished product.

### METHOD OF USE

Touchmill C/FAT is injected into the drum approximately 45 minutes after dry milling has begun, when the drum has reached a temperature of 45°C and the desired humidity of a 45% minimum.

On bovine leathers, we recommend using 1 Kg of the product for every 10 leathers, diluted 1 x 2 parts water.

The product quantity also depends largely on the hardness of the leathers.

After injecting the product, leave the humidistat closed for 20 minutes and then the drum is automatically brought back to temperature and humidity.

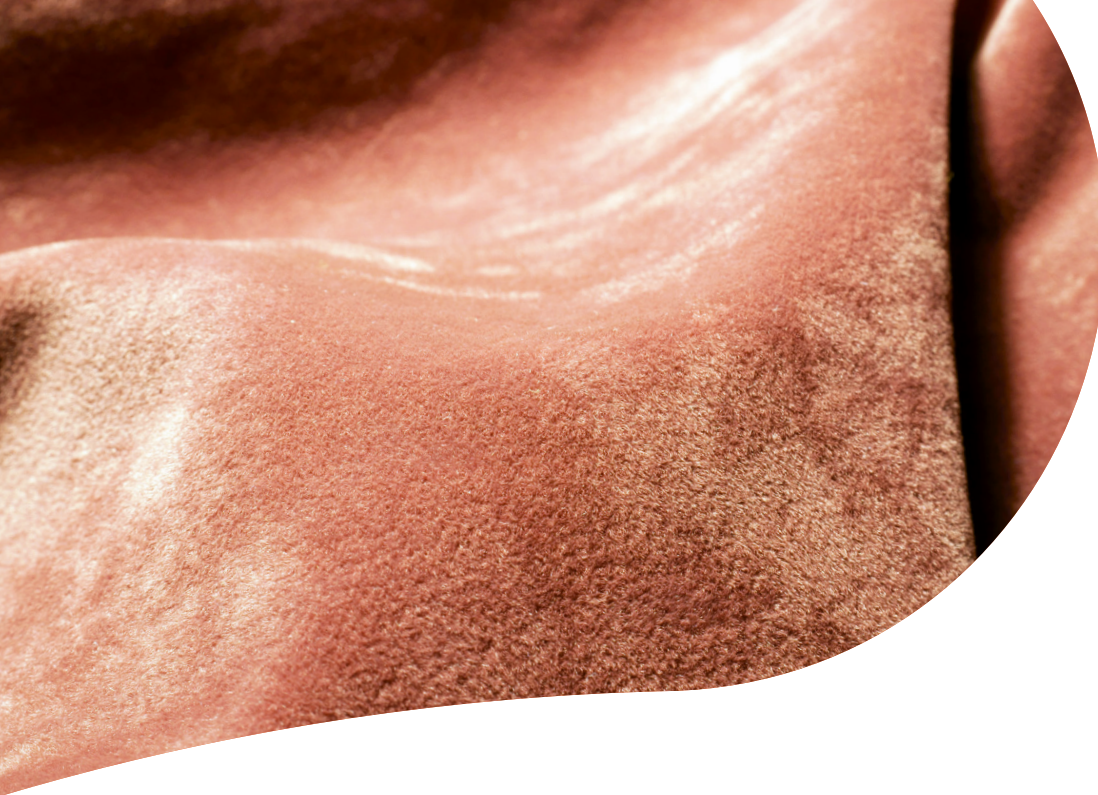
Keep milling for at least 8 hours.

Check, cool and remove leathers.

It is recommended to stake the leathers after dry milling.

This product may be used in a roller coating machine diluted 1 x 1 part water.

In this case Touchmill C/FAT must be applied onto the flesh part of the leather. After treatment, leave the leathers to rest for 24 hours and then stake them.



There is no beauty  
without intensity.

## **BRIGHTENERS** • TOUCHMILL C/I

### **TOUCHMILL C/I**

Touchmill C/I is used to intensify colours, ideal for suede, nubuck and full grain leather.

It is mainly applied on dark colours, especially black.

It has the characteristic of not making leathers oily, a very important prerogative for nubuck and suede, where the "nap" effect is primary.

It does not alter the hand of the leather.

The various touch modifiers of the Touchmill series can be mixed with Touchmill C/I to modify the hand.

#### **METHOD OF USE**

Put Touchmill C/I diluted 1 x 8 parts water, 120 minutes before the end of the tumbling phase.

It is recommended to use 1% on the dry weight of bovine leathers.

Once the injection is finished, close the humidistat and leave it closed for 5 minutes.

After 5 minutes, bring the drum back to the desired temperature and humidity.

Keep milling for 90 minutes.

Check, cool and remove leathers.



# AUTOMOTIVE

- TOUCHMILL C/CAR
- TOUCHMILL C/2030

## TOUCHMILL C/CAR

Touchmill C/CAR is a product designed for the application on hides intended for automotive and does not compromise the Fogging Test.  
It helps to soften leathers and is excellent on wet white leathers.  
To be used on crust leathers.

### METHOD OF USE

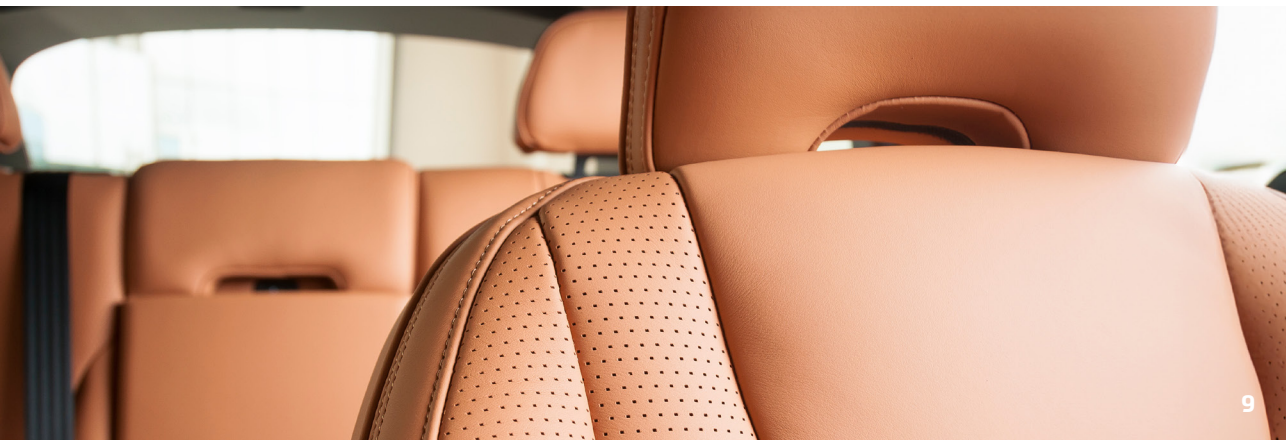
We recommend using Touchmill C/CAR on crust leathers by applying it with the roller coating machine (R.C.M.). Dilute the product 1 x 1 part water and apply onto the flesh part of the leather. Leave the leathers to rest for 24 hours and then stake them.

## TOUCHMILL C/2030

Touchmill C/2030 is a product designed to soften all types of leather.  
It is particularly suitable for automotive leathers.  
It does not compromise the fogging test.  
The special feature of this product is that it is odourless, therefore it is recommended for passing the odour test and in the treatment of soft nappa-type articles.

### METHOD OF USE

It is applied in rollers on crust leathers on the flesh side before milling to obtain a uniform softness and grain.  
It is not applicable in milling drums.  
The dilution is 1 part product to 0.5 parts cold water.  
The amount of product to be applied depends on the hardness of the leather. For a good result, the application of 80 grams of product/water mixture per square metre is sufficient.  
After application, the leathers are left to rest for 24 hours and then the staking and subsequent operations can be continued.



# TOUCH MODIFIERS

Touch to feel and  
experience emotion.

- TOUCHMILL C/W8
- TOUCHMILL C/LDM
- TOUCHMILL C/LDS
- TOUCHMILL C/WS
- TOUCHMILL C/WO
- TOUCHMILL C/WA
- TOUCHMILL C/O1
- TOUCHMILL C/WAX
- TOUCHMILL C/464
- TOUCHMILL C/232
- TOUCHMILL C/SC
- TOUCHMILL F/011
- TOUCHMILL G/07
- TOUCHMILL LPG
- TOUCHMILL 883
- TOUCHMILL 799
- TOUCHMILL LF
- TOUCHMILL C/LUX



## TOUCHMILL C/W8

Touchmill C/W8 is a touch modifier, ideal for all finished leathers and for nubuck and suede.

It gives leathers a waxy and slightly talc hand.

After using Touchmill C/W8, leather has the sensation of being softer.

Neither the opacity nor the shine of the leather finish changes.

Touchmill C/W8 is also used at the beginning of tumbling (when a temperature of 45°C is reached) to soften finished leathers and helps in "crocking" the finish. For it to have a good effect, it is sufficient to tumble only 4-5 hours after the product is applied. Compared to Touchmill C/FAT, C/W8 it has a less softening effect, but the leather is lighter, and the finish effect is unaltered.

It is a product that can be used in water-based fixatives at 5-6%.

Below we propose a recipe to increase the waxiness of Touchmill C/W8 which gives excellent results:

- 50pp. Touchmill C/W8
- 50pp. Touchmill C/LDM

## TOUCHMILL C/LDM

Touchmill C/LDM is a universal touch modifier, ideal for all finished leather items and types.

It gives leathers a hand with a lasting waxy effect that is slightly shiny and very natural.

Excellent also for solvent finishes

Below we propose a recipe to achieve a soft, waxy and slightly shiny effect:

- 50pp. Touchmill C/W8
- 50pp. Touchmill C/LDM

## TOUCHMILL C/LDS

Touchmill C/LDS is a universal touch modifier, ideal for all finished leather items and types.

Excellent for thick leathers, which, with its waxy, slightly slippery and very natural hand, removes the noise effect that finished leather can have when rubbing against itself, therefore excellent for passing the Stick Slip Test.

Excellent also for solvent finishes.

Below we propose a recipe to achieve a very waxy, slightly shiny, but natural effect:

- 50pp. Touchmill C/LDS
- 50pp. Touchmill C/LDM

### METHOD OF USE FOR TOUCH MODIFIERS

It is recommended to use 2% on the dry weight of bovine leathers.

Put the product diluted 1 x 2 parts water, 90 minutes before the end of the tumbling phase.

After the product is injected, leave the humidistat closed for 5 minutes.

Reopen it and keep milling for 1 hour.

Check, cool and remove leathers.

## TOUCHMILL C/WS

It gives finished leathers a hand with a talc, shiny effect.

Its slight shininess gives a touch of quality to very soft "corrected grain" or "full grain" leathers.

It is especially suitable for finished leather goods, to achieve a more natural and shiny effect.

Using Touchmill C/WS on leathers with an oily and blocking fixative, a powder hand is achieved on the surface and pull-up-waxy hand when pressing on the leather.

It is also used for shiny points, when a powder hand is required.

It removes the noise effect that finished leather can have when rubbing against itself.

Excellent for passing the Stick Slip Test.

Excellent also for solvent finishes.

Below we propose a recipe to increase the waxiness of Touchmill C/WS:

- 50pp. Touchmill C/WS

- 50pp. Touchmill C/LDS

## TOUCHMILL C/WO

Gives finished leathers a hand with powder opaque effect.

Very nice on lightly finished and very soft leathers.

Especially suitable for lightly finished leather goods to achieve a more natural and slightly opaque style.

Using Touchmill C/WO on leathers with an oily and grippy fixative, a talc hand is achieved on the surface and waxy hand when pressing on the leather, while maintain an opaque finish.

Below we propose a recipe to increase the waxiness of Touchmill C/WO:

- 50pp. Touchmill C/WO

- 50pp. Touchmill 883

## TOUCHMILL C/WA

Touchmill C/WA is an ideal touch modifier for all finished leathers.

It gives leathers a hand with waxy effect.

Neither the opacity nor the shine of the leather finish varies.

## TOUCHMILL C/O1

It gives leathers a hand with a waxy, slightly talc and shiny effect.

Excellent also for solvent finishes.

Shiny but natural effect.

Below we propose a recipe to achieve a soft, waxy hand and not to change the finish aspect:

- 50pp. Touchmill C/W8

- 50pp. Touchmill C/O1

# TOUCHMILL C/WAX

Touchmill C/WAX, is used on finished leathers for furnishing to achieve a very greasy and opaque effect. It has a very lasting effect.

Low temperature plating increases the round effect and removes the roughness that a water finish can give.

# TOUCHMILL C/464

It is never used alone but mixed with other touch modifiers to increase the grip.

In water fixing, it removes the slippery, plastic and rough effect of the leather, giving it a more natural and round hand.

It is a product that can also be mixed with water-based fixatives at 4-5%.

Below we propose a recipe to achieve a waxy and pull-up leather:

- 70pp. Touchmill C/LDM
- 30pp. Touchmill C/464

# TOUCHMILL C/232

It is never used alone but mixed with other touch modifiers to increase the gripping effect.

In water fixing, it removes the slippery, plastic effect of the leather, giving it a more natural and round hand.

Low temperature plating increases the round effect and removes the roughness that a water finish can give.

It is a product that can also be mixed with water-based fixatives at 5-6%.

Below we propose a recipe to achieve a waxy hand and tip shine effect:

- 70pp. Touchmill C/LDM
- 30pp. Touchmill C/232

# TOUCHMILL C/SC

Touchmill C/SC is never used alone but mixed with other touch modifiers to increase the slippery effect.

It is slippery and shiny at the verge of plasticity.

Below we propose a recipe to achieve a waxy, slippery and shiny leather:

- 80pp. Touchmill C/LDS
- 20pp. Touchmill C/SC

## METHOD OF USE FOR TOUCH MODIFIERS

It is recommended to use 2% on the dry weight of bovine leathers.

Put the product diluted 1 x 2 parts water, 90 minutes before the end of the tumbling phase.

After the product is injected, leave the humidistat closed for 5 minutes.

Reopen it and keep milling for 1 hour.

Check, cool and remove leathers.

## TOUCHMILL F/011

Is a touch modifier that gives a very natural hand, with a soapy, oily feel. Its shininess gives a touch of quality to finished leathers. It is a product that can also be used in water-based fixatives at 4-5%. This product can also be directly sprayed, diluting it 1 x 8 parts cold water.

## TOUCHMILL G/07

With Touchmill G/07, a slightly greased, pull-up and waxy effect is achieved. Very lasting. It has a very warm effect. It maintains its finish opacity. It can be used to opacify finishes that are too shiny.

Below we propose a recipe to achieve a waxy and opaque hand:

- 50pp. Touchmill G/07
- 50pp. Touchmill 883

## TOUCHMILL LPG

Added in water fixatives it removes the slippery, plastic effect of leather, giving it a waxier, rounder and more natural hand.

Iron at low temperature increases the round effect and removes the roughness that a water finish can give. Excellent for increasing tip shine effect.

After injecting this touchmill product, it is recommended to bring the temperature to 50°C, humidity to 30% and tumble for at least 90 minutes. This will help to develop the tip shine effect.

## TOUCHMILL 883

Gives leathers a hand with lasting waxy effect. It has a very warm effect. It maintains its finish opacity. It can be used to opacify finishes that are too shiny.

Below we propose a recipe to achieve a soft, waxy hand that does not vary in the finish aspect:

- 50pp. Touchmill C/W8
- 50pp. Touchmill 883

# TOUCHMILL 799

Excellent for all leathers that require a greased and grippy hand.  
It is never used alone but mixed with other touch modifiers to increase the greasy effect.  
It is a product that can also be mixed with water-based fixatives (3-4%).

Below we propose a recipe:

- 40pp. Touchmill 799
- 30pp. Touchmill 883
- 30pp. Touchmill C/LDM

# TOUCHMILL LF

Touchmill LF is a touch modifier ideal for all finished leathers.  
It gives leathers a hand with waxy and slightly talc effect.  
Neither the opacity nor the shine of the leather finish varies.  
It is a product that can also be mixed with water-based fixatives (5-6%).

Below we propose a recipe to increase Touchmill LF waxiness:

- 50pp. Touchmill LF
- 50pp. Touchmill 883

# TOUCHMILL C/LUX

Touchmill C/LUX is a touch modifier for fur leathers and for leather goods, giving shininess and a slippery hand.

## METHOD OF USE FOR TOUCH MODIFIERS

It is recommended to use 2% on the dry weight of bovine leathers.  
Put the product diluted 1 x 2 parts water, 90 minutes before the end of the tumbling phase.  
After the product is injected, leave the humidistat closed for 5 minutes.  
Reopen it and keep milling for 1 hour.  
Check, cool and remove leathers.

# CURIOSITY

- TOUCHMILL C/A
- TOUCHMILL FIX C/295
- TOUCHMILL NO SMELL
- TOUCHMILL SC04

Life without curiosity  
is not worth living.

## TOUCHMILL C/A

Touchmill C/A has been developed in order to eliminate the formation of electrostatic charges during the dry milling process.

It is very good to avoid dust to stick on leathers.

It can be used both on crust and finished leathers and does not change the final touch.

### METHOD OF USE

On bovine leathers 0,5% of Touchmill C/A based on the dry weight.

It is injected in the milling drum diluted 1 x 6 parts cold water.

It can be injected about 45 minutes after the milling process has started, when the temperature has reached 45°C and the humidity is at least 45%.

Once the injection is finished, close the humidistat and leave it closed for 5 minutes, then bring the drum back to the desired temperature and humidity.

Keep milling as much as required.

Check, cool and remove leathers.





# TOUCHMILL FIX C/295

Powder and colour fixer on nubuck and suede

Touchmill FIX C/295 is a fixing agent with a protective action that prevents the release of powder and colour, which are the cause of the undesirable effects of dirt from contact with leather.

Although it is polymeric in nature, Touchmill FIX C/295 thanks to its special cross-linking film does not reduce the nubuck and suede effect of leathers, guaranteeing a pleasant hand.

## METHOD OF USE

Touchmill FIX C/295 is used by spraying after diluting 1:1 with cold water.

It is also possible to apply the product with curtain-coater, roller-coater and hand or air-less spray guns.

# TOUCHMILL NO SMELL

Touchmill No Smell is a formulation that acts on the cause of bad odours.

It does not alter the hand of the leather.

Touchmill No Smell needs a few days to complete its "odour-eating" process.

## METHOD OF USE

Touchmill No Smell is injected into the dry-milling drums at a temperature of 30°C - 32°C and humidity of 45%.

Touchmill No Smell must be diluted 1 x 1 part water, 120 minutes before the end of the tumbling phase.

On bovine leathers, 3% is used on the dry weight of the leathers. The quantity depends on the intensity of the leather odour.

Once the injection is finished, close the humidistat for 5 minutes, then mill for 90 minutes always at 30°C - 32°C and at a humidity of 45%, then check, cool and remove leathers.

Touchmill No Smell can also be applied by spraying or roller coating machine.

It is also a product to be used in the final retanning bath, before unloading the leathers, in the amount of 1% on the shaved weight.

# TOUCHMILL SC04

Touchmill SC04 is an excellent product to fix the powder and colour on suede leathers.

It leaves a talc hand, slightly waxy, without being oily.

An excellent reviver.

## METHOD OF USE

Touchmill SC04 is injected into the dry-milling drums at a temperature of 30°C - 32.

Put the product diluted 1 x 3 parts cold water, 2 hours before the end of the tumbling phase.

It is recommended to use 2% on the dry weight of bovine leathers.

Once the injection is finished, close the humidistat and leave it closed for 5 minutes after the product has finished.

After 5 minutes, bring the temperature of the drum back to 45°C and to the desired humidity.

Keep milling for 90 minutes.

Check, cool and remove leathers.

It can be directly sprayed, diluted 1 x 2 parts water.



TOUCH



HMILL

**“Professionalism, Courage, and Passion” are the distinctive elements that best represent GSC Group, a leading Italian company in chemical products for the tanning sector, that has been successfully operating nationally and internationally for over 40 years.**

In recent years, pursuing a corporate policy of growth and investments, the Group has achieved an annual production of about 40.000 tons of liquids, powders, and pigments with a network of agents and distributors in over 50 countries. GSC has continued to grow thanks to the contribution of a staff of about 200 professionals, including technicians for all types of support and assistance, and highly qualified researchers. Our products across all sectors (Automotive, Upholstery, Footwear, Leather Goods and Garments) are the result of a constant search for new technical solutions with high added value for our customers. We design our products by capturing changes in the ever evolving and complex economic and social context.

The company has been committed to sustainability for years. The well-being of people and the protection of the environment are our priorities, and they extend to our production processes, final products, and shipping. GSC Group has made the green philosophy its own. Our current certifications include ISO 9001:2015, ISO 14001:2015 and ISO 45001:2018. In 2020 the company also obtained the GHG (greenhouse gas) certification for reduced environmental impact and the calculation of our Carbon Footprint according to the ISO 14064-1 standard. This made us the first in the leather chemical industry to be part of the Carbon Footprint Italy register. The goal of sustainable development will continue to be a cornerstone of our company for years to come and we invite you to consult our annual Sustainability Report for more info.



**GSC GROUP S.p.A.**  
Via dell'Industria, 5  
36054 Montebello Vic.no - Vicenza - Italy  
T. +39 0444 670949 / 671061  
F. +39 0444 670321

info@gscgroup.it  
**gscgroup.it**



Verification Statement IT301513-2 dated  
06.12.22 concerning the GHG Inventory  
Issued by Bureau Veritas  
for the calendar year 2021

Certified paper



Respecting nature today means living better tomorrow. The protection and safeguarding of the environment represent many efforts that is necessary to follow in order to save our future. It is a commitment very important to each of us, and we pursue it with pride and effectiveness. For this reason we chose to print our brochures with **FSC (Forest Stewardship Council)® certified paper**, i.e. coming only from sustainably managed forests and responsible sources.